

Can your logistics handle the demands of e-commerce this Christmas?

The keys to success.

Xabier Gonzalez, Commercial Director



Contents

Introduction by the Author	3
The Singularity of Christmas	4
Ready for Success this Christmas?	6
Pick To Light Systems	8



Introduction by the Author

After enjoying the month of August, we all look forward to December, the month of Christmas. That month when the streets are adorned in red, the shop windows show their most creative side, there is a sense of peace at the markets and on Christmas Day the trees are covered with colourful parcels.

But are your internal logistics ready to cope with the sales peak in the weeks leading up to Christmas?

Added to this peak is the complexity of omni-channel retailing: all studies predict an increase in the e-commerce channel due to the pandemic and the resulting changes in behaviour. Are you sure your warehouse is ready to handle all the orders? And most importantly: Without errors and respecting delivery times?

If the answer is NO, in this White Paper we give you the main keys to filling every home with smiles, and most importantly, to making you smile because you have been able to optimise your company's internal logistics.

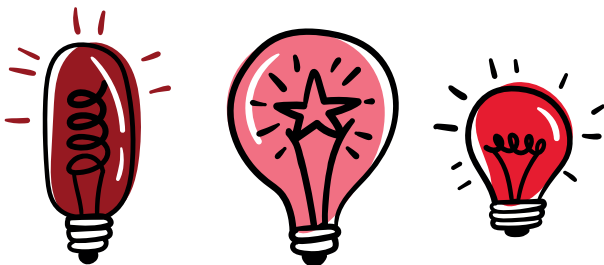
The Singularity of Christmas

All the excitement accumulated over many weeks is focused on a single day:

Christmas Day.

Therefore, companies must be prepared to cope with the huge wave of orders, both to shops and to end customers.

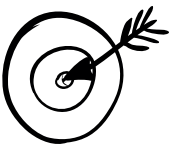
The most important holiday of the year has different characteristics that result in the need for sophisticated logistics to satisfy the desires of all shoppers.





Order Peaks

The number of orders to be picked multiplies. Some of the most frequent problems are delays in the order picking due to manpower, inefficient operations that double or triple the number of warehouse staff and the need for training weeks before the start of the campaign, among others.



0 Errors

Errors in orders at this time lead to dissatisfied customers, which can damage the good work done by the company with repercussions for online orders.



Key days

Deliveries within 24 hours are more important than ever, because not receiving gifts is inconceivable. Hence the importance of streamlining order picking, dispatch and delivery in an omni-channel environment.



Reverse logistics

The increase in orders leads to an increase in returns. Reverse logistics means higher costs in the warehouse: both in terms of staff and space.

“ Picking processes are the key factor in all logistics. If that simple operation is processed incorrectly, the entire investment in the warehouse (building, shelves, forklifts, etc.) will have been of no use, and the buyer will have a negative experience.

Xabier Gonzalez

Ready for Success this Christmas?

Omni-channel retailing is more important than ever: 2020 marked a milestone in the rise of **e-commerce** in the wake of the health crisis caused by Covid-19. And this milestone has also had an impact on Christmas shopping, as consumers have new shopping habits.

To cope with the growth in activity, with no mistakes and minimising the costs involved in the companies' internal logistics, it is important to have the ability to adapt to these waves and be agile.



Batch Picking

The workers in the warehouse have a single, optimised route, resulting in considerable time savings. The entire lot (more than 1 order) will be collected in a single journey, avoiding repetitions of the same route.



+ info.

Pick To Light

The Pick To Light solution is a convenient, fast and intuitive system, which facilitates paperless order picking, keeping hands free.



+ info.

Put To Wall

Workstations with individual spaces for each order. After the Batch Picking is complete, all the units must be sorted by order. The Put To Wall solution facilitates this process, thanks to Pick To Light devices.



+ info.

“

*The experience in e-commerce projects and the versatility of Pick To Light Systems' solutions make our technology the **best value for money** on the market. Depending on the solution, we can have **production increases** from **45% to 600%** with an **ROI in less than 1 year.***

Xabier Gonzalez

Pick To Light Systems

At Pick To Light Systems we offer advanced solutions to optimise all your warehouse processes.

Based in Oñati (Guipúzcoa), it was founded in 2002 as a company belonging to AIOI Systems (Japan).

**Do we speak
your logistics?**

+34 943 71 88 20

xgonzalez@ptlsystems.com

www.picktolightsystems.com



pick to light

Your efficiency, our guiding light

